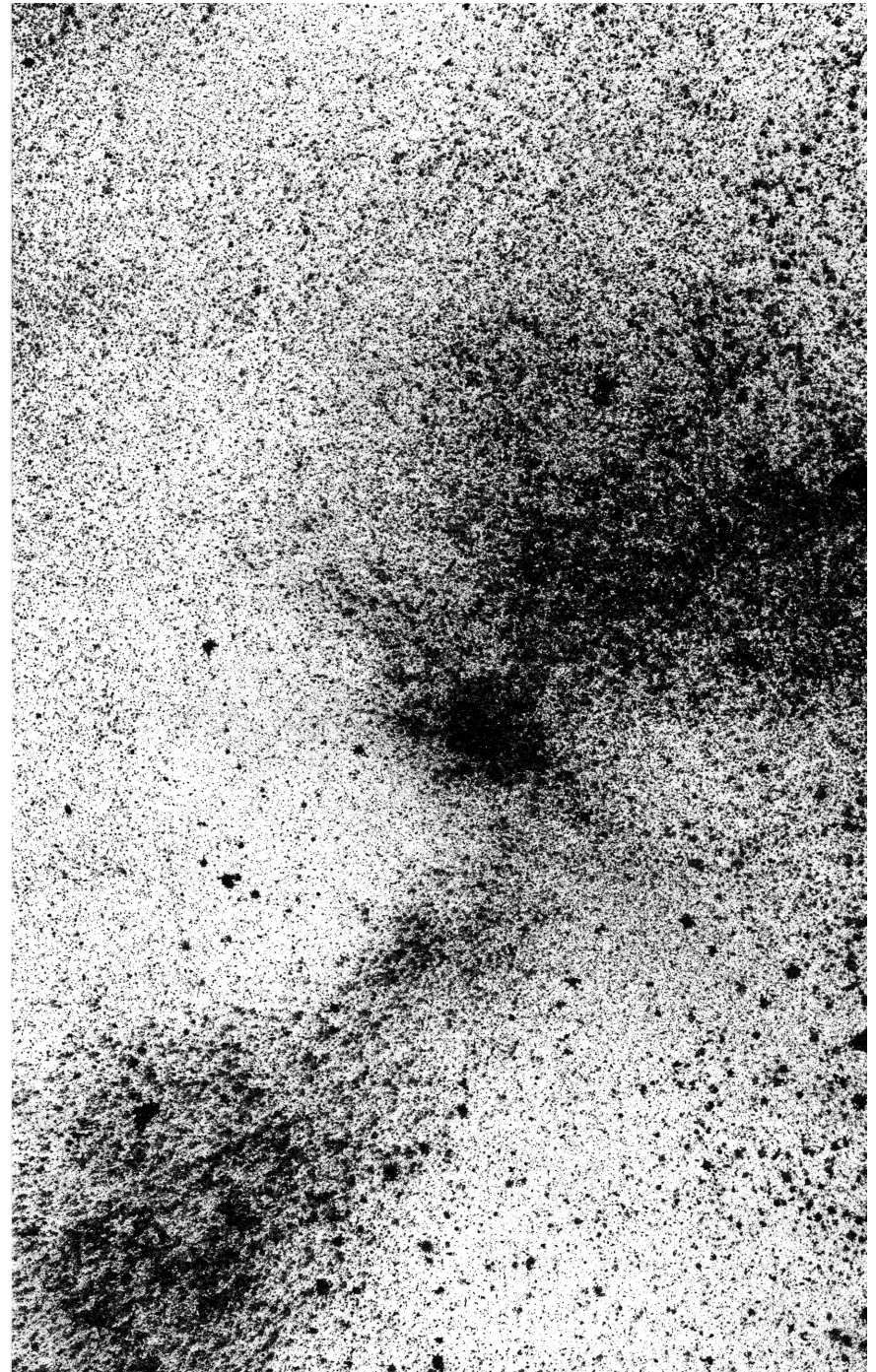


Jonas Ib F. H. Jensen

CONCERNING THE NONSENSICAL

It is not quite right to say of nonsense, that it is simply that which negates sense; one should rather acknowledge nonsense as something that is itself, entirely by itself. The non- in nonsense is not a negating non-, but rather a self-sufficient non-; a non- that refers only to itself, and not to that which it opposes. Because it must be said, that it does oppose something; that something is what we have come to consider sensible, as that which makes sense. The central point is that the opposition is not a negating gesture, it is rather a position between two autonomous variables; variables that could just as well replace each other, at any given time, and still be just as valid.

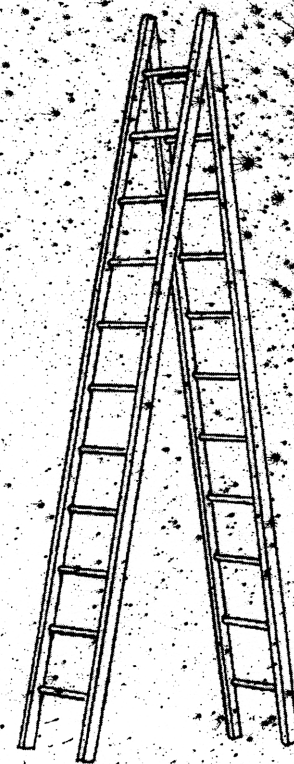
Certain aspects of being have come to constitute sense and thus have the property of being sensible. Such aspects are what make up abstract ideas, such as truth and reality; abstractions that serve as container-concepts, containing whatever is projected onto them, to make sense of them or rather to have them make sense. These abstractions do not have any meaning by themselves, and thus, should be considered nonsensical by themselves. In this way, it must be clear, that if nonsense stands as an opposition to sense, and sense is said to be nonsensical; then what nonsense is in opposition to is actually itself, leaving sense entirely out of the picture.



The Song That Never Ends*

...this is the song that never ends,
It just goes on and on, my friends.
Some people started singing it not knowing what it was,
And now they can't stop singing it forever just because...

* Norman Martin

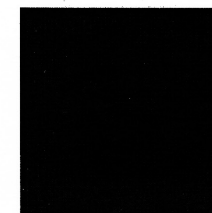
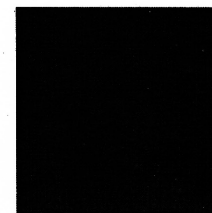
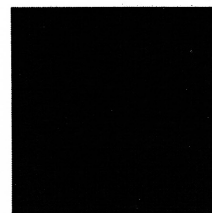
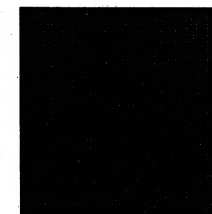
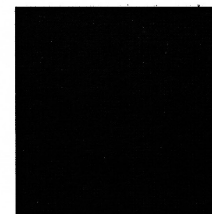
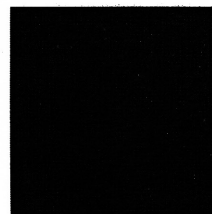
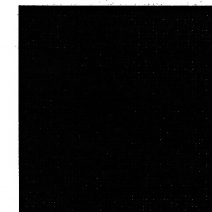
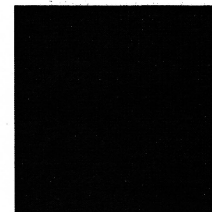
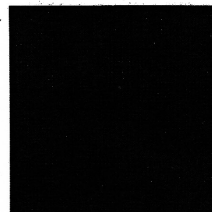
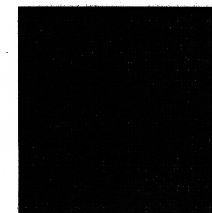
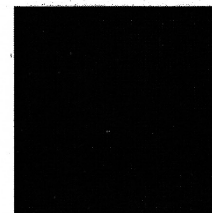
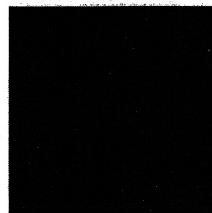
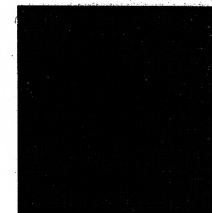
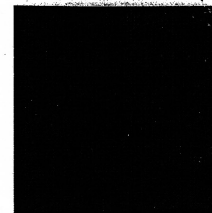
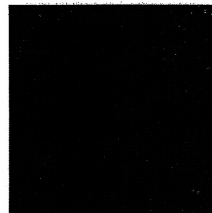


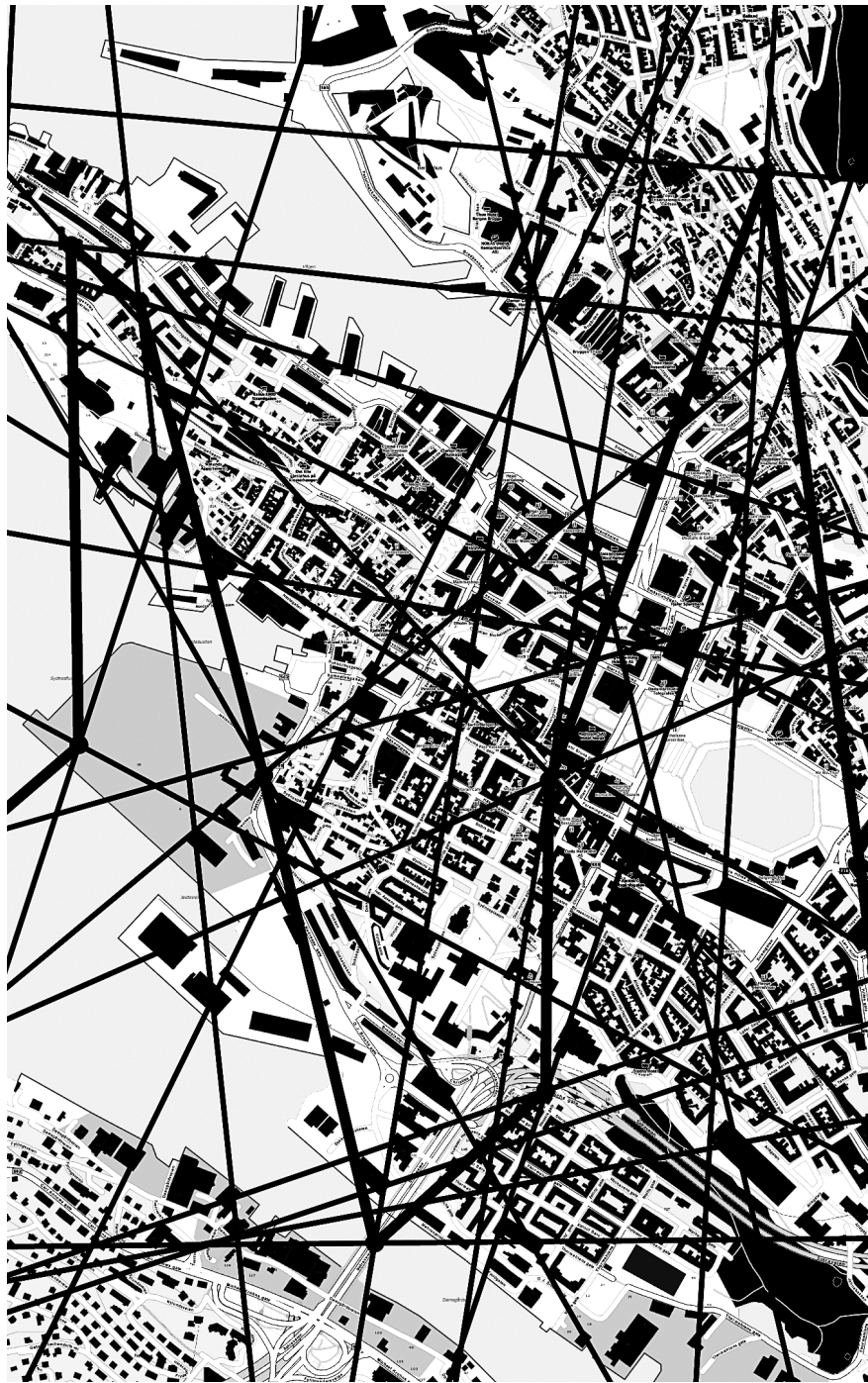
opposing ladders

PROPOSITIONS #2, 1-20

PS#02_20-18022011

- # 1. The world is neither possible nor impossible.
- # 2. The # of possible worlds is infinite.
- # 3. The real is assumptions based on assumption.
- # 4. The work of art can only refer to itself [QEF].
- # 5. There is no suitable application of human reasoning.
- # 6. The real is veiled in mystery.
- # 7. Chance, in all its fluidity, is the world.
- # 8. A thought is equivalent to an itch. [QED]
- # 9. One should not strive for absolutes, absolutes are unstable.
- # 10. .
- # 11. The artistic roving is bona fide.
- # 12. Conventions are abstractions of the real, in addition they are consumable.
- # 13. Chance is a capricious mediator.
- # 14. The sum of an infinite # of nothings is nothing.
- # 15. In the states of affairs chaos is the state and change is the affair.
- # 16. Something moves not because at one moment of time it is here and at another there, but because at one and the same moment it is here and not here. (Quoting Hegel)
- # 17. Words about art assume that they are superior to the art itself.
- # 18. The only constant is continuous change.
- # 19. The real has no validity over the unreal.
- # 20. Every thought is a throw of the dice (Quoting Stéphane Mallarmé)







Sleeping μ
5018 BERGEN
NORWAY

CONCERNING THE CONSTRUCTION IMPROVEMENTS TO THE "SOLITARY MOVEMENT" MODULES

Dear MR. μ , I write to inform you of the recent developments regarding the concerns addressed in our previous correspondence. As you know the mobile-sculpture modules have been undergoing continuous testing and improvement; as a result certain problems have been resolved.

Firstly; the gear-box motor has been adjusted to 15RPM; this will further increase the torque value to 250 N*cm [25.4929 kgf-cm2]. In other words the motor can pull roughly 25 kilo.

Secondly; the issues we had with blowback voltage on the motion detectors has been eliminated. The damage was caused by the surge of voltage, coming from the collapsing magnetic field, in the inductive load of the relay and motor. Additional damage has been avoided by connecting the DC +12V to the Y1 trigger contact of the relay, instead of the A1 contact, in this way no consumption power will flow trough the sensor except the signal output. We also installed a 12v Zener diode (BZX55C12V, 500mW DO41 ROHS) on both the Y1 and the A2 contacts eliminating any further chance for blowback.

Thirdly; the Hyrax TX sensor modules has been replaced by a similar, but more reliable, Traxxar Tz Pyroelectric sensor (PIR) with a Phil Neal optical filter and BISS0001 chip. The replacement module has a wider range of working voltage (DC+8V--+24V or DC+3.3V) and additional modification options such as: pulse output or relay control output, Enable LDR/Disable LDR, and Retriggerable/Non-triggerable output signal.

More importantly it has adjustable detection sensitivity and a broader detection range and can detect a body within 3-4m and 100° at 26 °C and maximum sensitivity. Since the fresnel lens of the sensor in this case is subduced into the module the detection range is by proximity halved.

The PIR sensor reacts to alterations in radiation temperature in the infrared (IR) landscape that is in its field of view and can accurately detect any moving object (e.g. human body) within this detection range. The PIR sensor in this way detects motion indirectly and passively as a change of temperature in the Infrared radiation (IR spectrum) of a remote object or landscape. Pursuant to this it is important to be aware that the sensors sensitivity will reach highest when a human body moves sideward relative to the module and will reach lowest when a body moves vertically in relation to it.

At the present moment all issues seem to be resolved and the modules are ready to be delivered. However to err on the side of caution we will, as agreed, keep testing the modules throughout February 2011. Delivery date is expected to be prior to 15th of mars 2011.

yours sincerely

Nikolaj Dinær
1st tech assistant at dep. of sciential-
engineering, TechDev 'n' applied nuances